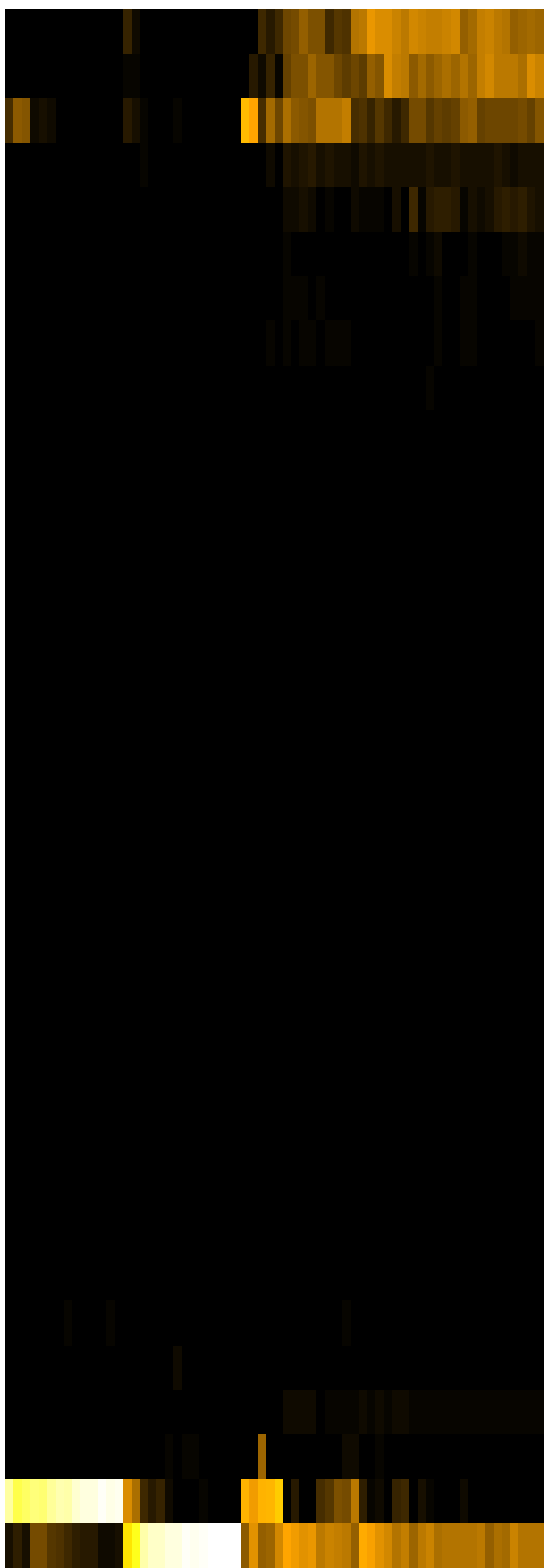
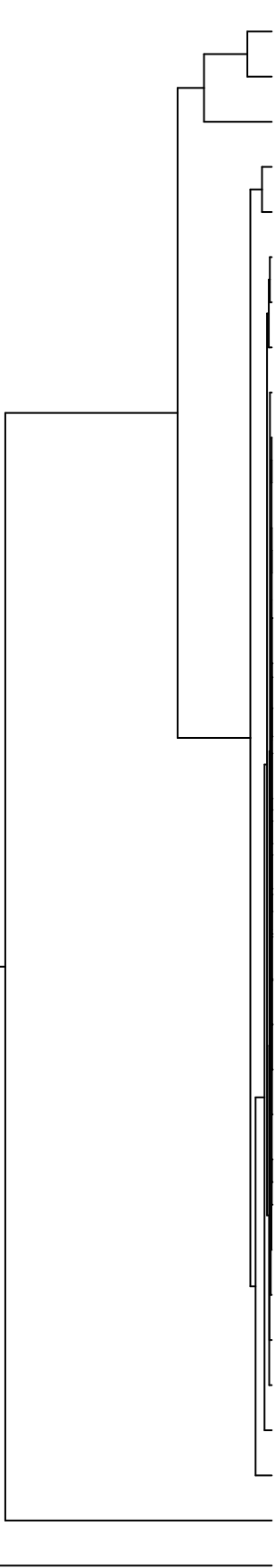


Group006  
 E Final -PMA  
 B Final -PMA



- Veillonellaceae
- Pasteurellaceae
- Neisseriaceae
- Carnobacteriaceae
- Fusobacteriaceae
- Campylobacteraceae
- Porphyromonadaceae
- Gemellaceae
- Leptotrichiaceae
- Erysipelotrichaceae
- Saccharibacteria\_(TM7)\_[F-1]
- Atopobiaceae
- Burkholderiaceae
- Abconditabacteria\_(SR1)\_[F-1]
- Flavobacteriaceae
- Phyllobacteriaceae
- Rhizobiaceae
- Yersiniaceae
- Comamonadaceae
- Sphingomonadaceae
- Microbacteriaceae
- Weeksellaceae
- Hymenobacteraceae
- Saccharibacteria\_(TM7)\_[F-2]
- Mycobacteriaceae
- Propionibacteriaceae
- Moraxellaceae
- Lachnospiraceae
- Prevotellaceae
- Staphylococcaceae
- Pseudomonadaceae
- Actinomycetaceae
- Micrococcaceae
- Enterobacteriaceae
- Streptococcaceae

Family

- F28914.S566
- F28914.S563
- F28914.S408
- F28914.S561
- F28914.S406
- F28914.S403
- F28914.S405
- F28914.S426
- F28914.S590
- F28914.S587
- F28914.S591
- F28914.S429
- F28914.S586
- F28914.S592
- F28914.S568
- F28914.S427
- F28914.S428
- F28914.S088
- F28914.S084
- F28914.S082
- F28914.S083
- F28914.S247
- F28914.S246
- F28914.S244
- F28914.S267
- F28914.S268
- F28914.S272
- F28914.S107
- F28914.S269
- F28914.S270
- F28914.S112
- F28914.S111

Samples